

Print & Cut Equipment and Garment Heat Transfer Film for the Professionals



Leaders in Garment Decoration Equipment



Amaya Sales UK offer leading equipment and consumables for the garment decoration industry. We always aim to provide you with the best leading products at the best value for money. We back this up with first class support and training from our team of experienced professionals.

Roland:

Amaya Sales UK offer the latest Roland TrueVis SG3 and VG3 series of large format print and cut equipment in 30", 54" and 64" widths. They all provide outstanding colour and profitable productivity. They also include the award winning TrueVis TR2 ink in 500cc pouches.

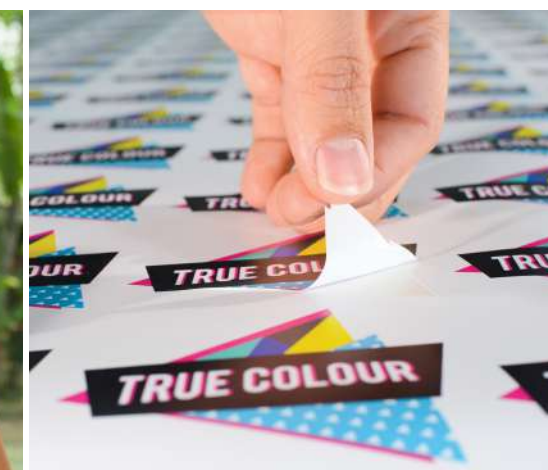
SEF:

SEF textile have been involved in manufacturing garment decoration products for 40 years. Their garment film is a water based product with no solvents involved, completely safe for the environment with many products carrying the Oeko-Tex accreditation.

All their film and flock is produced under one roof giving total control over quality and consistency. They produce a full range of products for virtually any requirement including excellent print and cut materials.

Graphtec:

Our vinyl cutter range includes both the Roland and Graphtec machines and has everything you need, whether you are a beginner to this industry or an expert looking for the best equipment in vinyl cutting hardware. The equipment is built to last and very easy to use. Both brands are suitable for use with our SEF Heat Transfer Vinyl or regular sign vinyl. Across the range, they are available in widths of 30, 40, 50, 60, 137 and 162cm.



Roland SG3 Series



Designed to exceed expectation. True Excellence, Outstanding Colour, Highly Reliable Print and Cut.

You know where you want to go - but where you start can really make a difference. With the TrueVIS SG3 solution, you are prepared from day-one to produce a variety of products from large wall graphics to small stickers, all on the same device, using the same software and supported by the same great partnership.

Whether you are just starting out or looking to take your business to the next level, the SG3 printer/cutters deliver the trusted quality of the award-winning TrueVIS brand with a streamlined workflow and the super-fast, same-day turnaround speeds you need. TR2 inks produce stunning, vibrant colours across a huge range of applications - from signs, labels and heat transfers to car wraps and so much more.

Available in 2 sizes, the SG3 series combines impressive performance with incredible value and is certified by the industry's leading media manufacturers. Show your customers what you can do with TrueVIS SG3.

- ▶ Fast and easy setup
- ▶ Print, Cut, Print and Cut all in one device
- ▶ Exceptional versatility
- ▶ TrueVIS2 Ink Technology in 500CC pouches
- ▶ Take up system included
- ▶ Low running costs
- ▶ One year onsite warranty (options available)
- ▶ Roland Versaworks 6 RIP Software
- ▶ Suitable for Heat Transfers, Stickers, Banners and much more

Printer/Cutters

TrueVIS, the latest generation of Roland DG integrated print & cut technology, is the result of more than 35 years of leading innovation from the number-one print & cut brand in the world, trusted by thousands of daily users around the globe. Multi-award-winning TrueVIS technology is designed to meet the 'real world' needs of print professionals, delivering the widest versatility, highest reliability and truly outstanding quality - all with a same day job turnaround.



Outstanding Colour

TrueVIS TR2 ink to enhance your business with 'True Rich Colour'

Using Rolands TrueVIS TR2 ink to enhance your business with 'True Rich Colour' The True Rich Colour colour management preset takes full advantage of the SG3's superior colour reproduction capability and the wide colour gamut provided by the ink. Vibrant colours can be combined with neutral greys, smooth gradations and natural skin tones to create stunning graphics. This pioneering print quality is unequalled for durable prints.



The most advanced generation of TrueVIS

- ✓ FlexFire print heads, TR2 inks, and True Rich Color combined with user-friendly features make the SG3 the perfect performance-level printer.
- ✓ A redesigned chassis, high-quality components, and a variety of media handling improvements make the SG3 perfect for runs of decals, small signs, partial wraps, and more.

Enhanced features with you in mind

- ✓ Easy-to-operate, and intuitive 7" LCD touchscreen control panel.
- ✓ Automated media calibration saves time and material.
- ✓ Newly designed, adjustable media take-up unit accommodates rolls of different sizes.
- ✓ One-touch media clasp makes loading media rolls easy for a single operator.

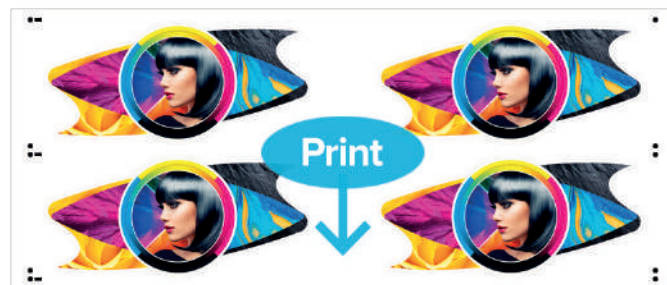
Expanded Colour Output

- ✓ With an array of features, plus TR2 inks in CMYK, the SG3 is amazing value for print providers and graphic creators.
- ✓ A 54" model is a perfect fit for new shops or existing businesses looking to expand production.
- ✓ The 30" SG3-300 is the ideal blend of performance and affordability to start printing profitable signs and graphics.

Highly Reliable Print & Cut Production

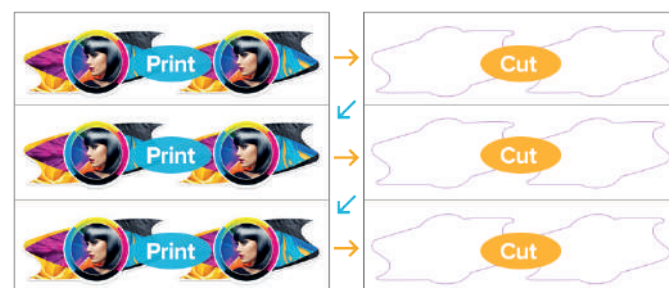
Automated Long-run Decal/Label Production

Automated Long-run Decal/Label Production With some other print solutions, when producing stickers, decals and labels, due to media tolerance and the length of the print job, print and cut accuracy can decrease. With the advanced cutting functionality of the SG3/VG3 you are assured consistent, highprecision accuracy, however long the print job.



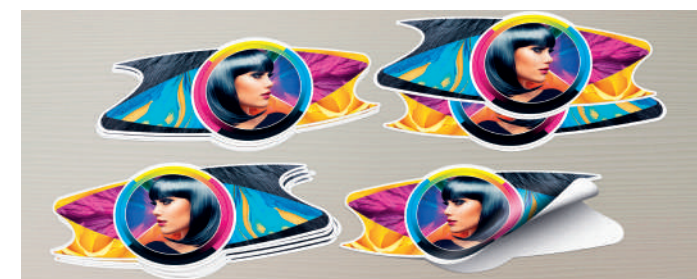
Lengthy Print & Cut Jobs with Crop Marks

The Roland multiple cropmark function, with variable options for cropmark registration, means you can choose cropmark frequency based on the length of your print job. Whether you are producing print, laminate then cut jobs or just after some high intricacy, then this feature should be top of your list.



Continuous Print & Cut Per Shorter Distances

The Custom Page function allows you to separate long production runs into manageable sections and use the integrated Print & Cut automated workflow, even in conjunction with the included take-up system, for maximum accuracy, minimum waste and faster overall turnaround.



Eliminate Trimming with Perforated Cut

Speeding up turnaround time, the improved cutting control technology of the SG3/VG3 introduces a precision perforated cut function for producing die-cut, ready-made decals and even custom-shaped labels – without the need to trim.

VersaWorks RIP Software to Power Your Business

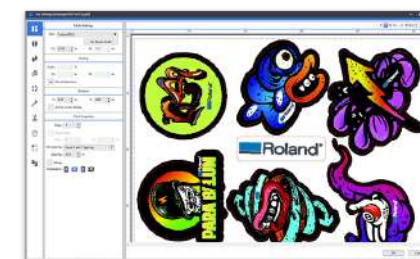
The VersaWorks 6 RIP software is designed to simplify operation while maximising the power of your SG3/VG3 and all other Roland DG devices. A Harlequin RIP dual-core engine with support for PDF 2.0 and native 64-bit processing provides accurate rendering of PDFs with shadows and transparencies.

- ▶ An icon-based interface with drag-and-drop functionality facilitates ease of use.
- ▶ Flexible print queue settings, hot folders, and unlimited presets.
- ▶ Special Colour Plate Generation lets you auto-generate.
- ▶ White ink layers from within the RIP Software.
- ▶ Built-in Pantone® and Roland Colour spot colour libraries.
- ▶ Rapid native PDF file processing - Easy handling and accurate reproduction of transparencies and shadows.
- ▶ On board cut line editing - add contour cut and perforated cut lines directly within the RIP.



Reproduce Special Effects Accurately

VersaWorks 6 supports processing of PDF files natively, rendering special effects, such as drop shadows and transparencies, the way they are intended to look in the design. Handle these files without hassle, for improved efficiency - from receiving the data to outputting consistent, high-quality results.



Intuitive User Interface. Smart RIP Software

A new, modern-looking user interface offers clean and simple tools with drag-and-drop functionality to quickly add jobs to the print queue directly from folders on your desktop. A more icon-based RIP environment improves user experience and provides easy navigation and functionality for all your print tasks and job management.

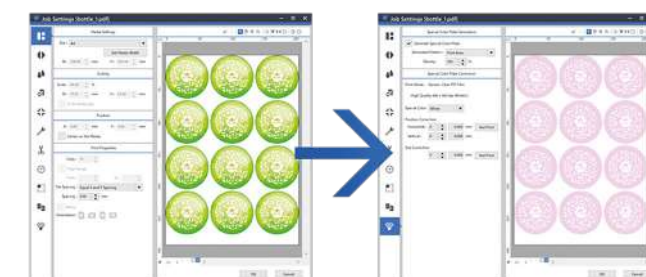


Five Print Queues and Hot Folders for Maximum Job Management and Efficiency

VersaWorks 6 helps busy print service providers plan and organise print production in advance with five print queues. Combined with five hot folders and unlimited queue settings, you can save and store options, capture specific print settings, and make production a fast, automated and continuous process. Ideal for recurring jobs and jobs involving multiple designers working in one location.

Generate a Special Colour Layer Directly in the RIP

Traditionally, when you wanted to specify a special colour layer like white, metallic, gloss/clear and primer, you needed to perform this task in your design software. With VersaWorks 6, you can set up a special colour layer directly in the RIP along with fine adjustments to the position and size of the layer. This means quick and simple set up, saving time and optimising your printing workflow.



Everything You Need to Succeed



**TrueVIS SG3
Printer/Cutter**

Choose a size to suit
your business

**TrueVIS INK
TR2**

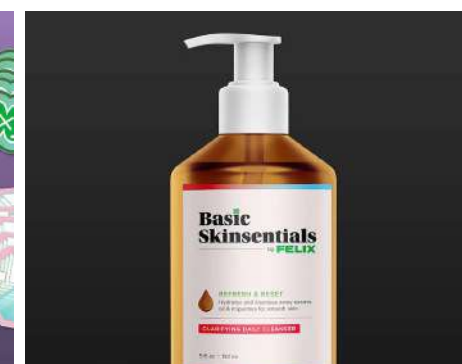
TrueVIS TR2 Ink
Get stunning results
every time with Roland's
economical TR2 ink



VersaWorks 6 RIP
Power your workflow
with our most intelligent
RIP software to date



**Roland DG
Care Warranty**
Secure your investment
with industry-leading



FAST AND EASY SETUP

The Roland TrueVIS SG3/VG3 is simple to set up and intuitive to operate so it's ready to boost your business straight out of the box. Start making money with your SG3/VG3 from day one.

GET THE MOST OUT OF YOUR DAY

The TrueVIS SG3/VG3 offers many automated features to minimise the need for operator intervention, freeing up your time so you can get on with the next job.

INCREDIBLE VALUE

The TrueVIS SG3/VG3's attractive price/performance ratio delivers an excellent return on investment.

EXCEPTIONAL VERSATILITY TO HELP YOU GROW YOUR BUSINESS

The TrueVIS SG3/VG3's extensive media compatibility means you can expand your product offering to deliver what your customers need - and access exciting, new high-margin markets and profitable applications.

BACKED BY INDUSTRY-LEADING MEDIA MANUFACTURERS

The TrueVIS SG3/VG3 with TR2 ink is backed by the 3M™ MCS™ Warranty and the Avery Dennison™ ICS™ performance guarantee to give you and your customers another level of quality assurance and offering you the chance to promote your business as certified.

TrueVIS SG3/VG3



1.

2.

3.

4.

5.

9.

8.

7.

6.

A SMART INVESTMENT

Like all Roland devices, the TrueVIS SG3/VG3 holds its resale value over time, making it a great investment now and in the future.

EFFICIENCY ON EVERY LEVEL

As a combined printer/cutter, the TrueVIS SG3/VG3 has a space-efficient footprint to fit into busy workspaces of all sizes, and is powered by standard electrical connections.

LOW RUNNING COSTS

The SG3/VG3 includes several new features to minimise running costs for increased profitability, including a new ink delivery system with automated maintenance sequences to reduce ink consumption by up to 54%.

RELIABILITY YOU CAN TRUST TO POWER YOUR BUSINESS

Innovative TrueVIS technology is backed by decades of Roland engineering excellence, with more than 129,000 print professionals worldwide choosing Roland printer/cutters*. You also get peace of mind from knowing your SG3/VG3 is backed by industry-leading professional support, ensuring your SG3/VG3 is ready for business whenever you are.

TrueVIS SG3 Series Technical Specification

Model		SG3-300	SG3-540
Printing Method	Piezo ink-jet method		
	Width	182 to 762 mm (7.2 to 30 in.)	259 to 1371 mm (11.7 to 54 in.)
	Thickness	Max. 1.0mm (39.3mil) with liner, for printing. Max. 0.4mm (15.7mil) with liner and 0.22mm (8.6mil) without liner, for cutting.	
	Roll outer diameter	Max. 250 mm (9.8 in.)	
	Roll weight	Max. 35 kg (77 lb)	Max. 30 kg (66 lb)
Media	Core diameter	76.2 mm (3in.) or 50.8 mm (2 in.)	
	Printing / cutting width	Max. 736 mm (28.9 in.)	Max. 1346 mm (52.9 in.)
	Ink	TrueVIS INK 500cc Pouch	
Ink	Type	Four colours (Cyan, Magenta, Yellow and Black)	
	Colours	Max. 1200 dpi	
Printing resolution (dots per inch)		10 to 300 mm/s (0.39 to 11.8 in/s)	
Cutting speed		30 to 500 gf	
Blade force		Roland CAMM-1 series blade	
Blade	Type	0.000 to 1.500 mm (0.0 to 59 mil)	
	Offset	Automatic sleep feature	
Power-saving function		0.025 mm/step (0.98 mil/step)	
Software resolution (when cutting)		Print heater set temperature: 30 to 55°C (86 to 131°F)	Print heater set temperature: 30 to 45°C (86 to 113°F)
Media heating system (1)		Ethernet (100BASE-TX/1000BASE-S, Automatic Switching)	
Connectivity		Automatic sleep feature	
Power-saving function		100-120/220-240 V.a.c. 50/60 Hz 5.4/2.7 A	100-120/220-240 V.a.c. 50/60 Hz 8.0/4.1 A
Power requirements		Approx. 710 W	Approx. 1090 W
Power consumption	During operation	Approx. 50 W	
	Sleep mode	63 dB (A) or less	
Acoustic noise level	During operation	53 dB (A) or less	
	During standby	2,022 mm × 748 mm × 1,320 mm (79.7 in. × 29.5 in. × 52.0 in.)	
Dimensions (with stand)		150 kg (331 lb.)	183 kg (404 lb.)
Weight (with stand)		Temperature: 20 to 32°C (68 to 90°F), humidity: 35 to 80%RH (no condensation)	
Environment	During Operation	Temperature: 5 to 40°C (41 to 104°F), humidity: 20 to 80%RH (no condensation)	
	Not Operating	Dedicated stands, power cord, Media take-up unit, media holders, replacement blade for separating knife, cleaning liquid, drain bottle, User's Manual, Software(VersaWorks, Roland DG Connect), etc.	
Included items		1* - The length of printing or cutting is subject to the limitations of the program.	

*1 - The length of printing or cutting is subject to the limitations of the program.

*2 - 500 gf is the maximum instantaneous blade force. The blade force must be adjusted according to details such as the media thickness.

*3 - Warm-up is required after power up. This may require 5 to 20 minutes, depending on the operating environment. Depending on the ambient temperature and media width, the preset temperature may fail to be reached.

VersaWorks 6 System Requirements

Operating system	Windows® 10 (32/64-bit), Windows® 8.1 (32/64-bit), Windows® 7 Professional / Ultimate (32/64-bit)
CPU	Intel® Core™2 Duo, 2.0 GHz or faster recommended
RAM	2 GB or more recommended
Video card and monitor	A resolution of 1280 x 1024 or more recommended
Free disk space (HDD/SSD)	40 GB or more recommended
Hard-disk file system	NTFS format
Optical drive	DVD-ROM drive
Ethernet Connection	100 mbps
Other	Internet connection recommended

About White Ink Due to the nature of white ink, the pigment in this ink can settle in the cartridge and ink flow system, requiring you to shake the cartridge before each use. Outdoor durability is three years for CMYKLCmLkOr inks, depending on the media used.

Options

Model		Description
TrueVIS INK	TR2-CY	Cyan, 500 cc
	TR2-MG	Magenta, 500 cc
	TR2-YE	Yellow, 500 cc
	TR2-BK	Black, 500 cc
	TR2-WH	White, 250 cc
	TR2-LC	Light Cyan, 500 cc
	TR2-LM	Light Magenta, 500 cc
	TR2-LK	Light Black, 500 cc
	TR2-OR	Orange, 500 cc
Cleaning liquid	TR2-CL	Cleaning liquid, 500 cc
Blades	ZEC-U5032	For standard sign vinyl, 2pcs.
	ZEC-U5025	For standard sign vinyl, reflective and fluorescent / thick media, 5pcs.
Blade holders	XD-CH2	Adjustable blade holder - aluminium
	XD-CH3	Adjustable blade holder - resin

VG2 Only

Roland VG3 Series



VG3-640
64" wide (1625mm)

VG3-540
54" wide (1371mm)

Exceptional performance for same day turnaround. Outstanding colour. Exceeds expectations.

TrueVIS VG3 delivers power and performance to satisfy the needs of the most demanding print professionals. With the option of orange and green ink, the VG3 offers superior colour reproduction and head-turning high-impact graphics plus unsurpassed cutting accuracy. Beat the competition and exceed your customers' expectations with the VG3. The latest generation of Roland DG integrated print & cut technology with the Take up system now included, is the result of more than 35 years of leading innovation from the number-one print & cut brand in the world, trusted by thousands of daily users around the globe. The Multi-award-winning TrueVIS technology is designed to meet the 'real world' needs of print professionals, delivering the widest versatility, highest reliability, and truly outstanding quality – all with a same day job turnaround.

Available in 2 sizes, the VG3 series combines impressive performance with incredible value and is certified by the industry's leading media manufacturers. Show your customers what you can do with TrueVIS VG3.

- ▶ Fast and easy setup
- ▶ Integrated Print & Cut
- ▶ Exceptional versatility
- ▶ TrueVIS2 Ink Technology in 500CC pouches
- ▶ Take up system included
- ▶ Low running costs
- ▶ One Year Silver onsite warranty
- ▶ Roland Versaworks 6 RIP Software
- ▶ Suitable for Heat Transfers, Stickers, Posters, vehicle graphics and much more.



Do Anything with High-quality Ink

Whether you need high speed production or extreme colour accuracy, the TrueVis VG3 solution is available in the perfect ink configuration for your business. Equipped with rigorously tested and industry certified TR2 inks, you can provide premium-quality prints at competitive prices.

VG3 Colour range configurations available:

- ▶ Dual CMYK
- ▶ CMYKLcLmOrGr
- ▶ CMYKLcLmOrGr
- ▶ CMYKLcLmLkWh
- ▶ CMYKLcLmLkWh
- ▶ CMYKLcLmLkOr

CMYK

Produce a huge range of colours with CMYK ink or double up for even greater productivity.

Light Colours

Use Light Cyan, Light Magenta and Light Black for smoother gradients and hyper-real skin tones.

High-Opacity White

Print high-opacity white details or add sub-coats for dark or transparent materials.

Gamut Extension

Reproduce your customers brand colours and more with even greater accuracy.



- ▶ GREENGUARD Gold Certified
- ▶ Fast Outgassing times
- ▶ Avery ICS Certified
- ▶ Excellent Durability

The most advanced generation of TrueVIS

- ✓ FlexFire print heads, TR2 inks, and True Rich Color combined with user-friendly features make the VG3 the ultimate in professional print graphics production.
- ✓ A redesigned chassis, high-quality components, and a variety of media handling improvements make the VG3 perfect for unattended printing of short runs, long runs, print/cut, and so much more.

Enhanced features with you in mind

- ✓ Easy-to-operate, and intuitive 7" LCD touchscreen control panel.
- ✓ Automated media calibration saves time and material.
- ✓ Newly designed, adjustable media take-up unit accommodates rolls of different sizes.
- ✓ One-touch media clasp makes loading media rolls easy for a single operator.

Expanded Colour Output

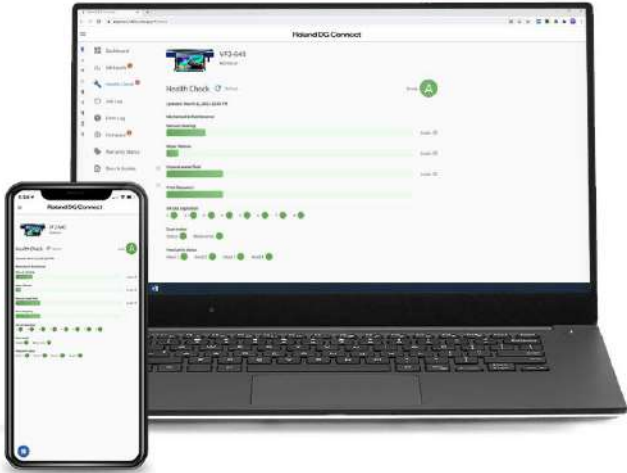
- ✓ Available ink configurations to meet your customers' needs—from brand accurate colours and high-end graphics to high-productivity jobs.
- ✓ Combine Orange and Green inks to push the colour boundaries of digital printing.
- ✓ New CMYK plus light cyan, light magenta, orange and green inks - combined with True Rich Colour 3 deliver vivid, smooth and colour rich graphics.



Roland DG Connect App

Reduce downtime and improve work efficiency with a machine monitoring assistant that helps you gain a detailed understanding of your entire print operation while keeping your device running at optimum performance.

- ▶ An easy to understand, colour coded dashboard gives an instant view of your overall device statistics
- ▶ Quickly monitor your ink usage per cartridge and printing volume timeline
- ▶ Quickly calculate job costs and profits by entering the pre-unit selling price and the cost for ink and media
- ▶ Improve profitability by setting appropriate sales prices and increasing cost awareness



TrueVIS VG3 Series Technical Specification				
Model		VG3-540		VG3-640
Printing Method		Piezo ink-jet method		
Media	Width	295 to 1371 mm (11.7 to 54 in.)	335 to 1625 mm (13.2 to 64 in.)	
	Thickness	Max. 1.0mm (39.3mil) with liner, for printing. Max 0.4mm (15.7mil) with liner and 0.22mm (8.6mil) without liner, for cutting.		
	Roll outer diameter	Max. 250 mm (9.8 in.)		
	Roll weight	Max. 35 kg (77 lb)	Max. 45 kg (99 lb)	
	Core diameter	76.2 mm (3in.) or 50.8 mm (2 in.)		
Printing / cutting width		Max.1346 mm (52.9 in.)	Max. 1600 mm (62.9 in.)	
Ink	Type	TrueVIS INK 500cc Pouch (White Pouch only 250ml)		
	Colours	Eight colours (cyan, magenta, yellow, black, light cyan, light magenta, light black, and white) Eight colours (cyan, magenta, yellow, black, light cyan, light magenta, light black, and orange) Eight colours (cyan, magenta, yellow, black, light black, orange, green and white) Eight colours (cyan, magenta, yellow, black, light cyan, light magenta, orange, and green) Seven colours (cyan, magenta, yellow, black, light black, orange, and green) Four colours (cyan, magenta, yellow, and black)		
Printing resolution (dots per inch)		Max. 1200 dpi		
Cutting speed		10 to 300 mm/s (0.39 to 11.8 in./s)		
Blade force		30 to 500 gf		
Blade	Type	Roland CAMM-1 series blade		
	Offset	0.000 to 1.500 mm (0.0 to 59 mil)		
Power-saving function		Automatic sleep feature		
Software resolution (when cutting)		0.025 mm/step (0.98 mil/step)		
Media heating system [®]		Print heater set temperature: 30 to 55°C (86 to 131°F)	Print heater set temperature: 30 to 45°C (86 to 113°F)	
Connectivity		Ethernet (100BASE-TX/1000BASE-T, Automatic Switching)		
Power-saving function		Automatic sleep feature		
Power requirements		100-120/220-240 Va.c. 50/60 Hz 8.0/4.1 A	100-120/220-240 Va.c. 50/60 Hz 8.0/4.1 A	
Power consumption	During operation	Approx. 1090 W		
	Sleep mode	Approx. 50 W		
Acoustic noise level	During operation	63 dB (A) or less		
	During standby	53 dB (A) or less		
Dimensions (with stand)		2,632 mm × 748 mm × 1,320 mm (103.7 in. x 29.5 in. x 52.0 in.)	2,886 mm × 748 mm × 1,320 mm (113.7 in. x 29.5 in. x 52.0 in.)	
Weight (with stand)		189 kg (417 lb.)	203 kg (448 lb.)	
Environment	During Operation	Temperature: 20 to 32°C (68 to 90°F), humidity: 35 to 80%RH (no condensation)		
	Not Operating	Temperature: 5 to 40°C (41 to 104°F), humidity: 20 to 80%RH (no condensation)		
Included items		Dedicated stands, power cord, Media take-up unit, media holders, replacement blade for separating knife, cleaning liquid, drain bottle, User's Manual, Software (VersaWorks, Roland DG Connect), etc.		
¹ - The length of printing or cutting is subject to the limitations of the program. ² - 500 gf is the maximum instantaneous blade force. The blade force must be adjusted according to details such as the media thickness. ³ - Warm-up is required after power up. This may require 5 to 20 minutes, depending on the operating environment. Depending on the ambient temperature and media width, the preset temperature may fail to be reached.				

VersaWorks 6 System Requirements		Options	
Operating system	Windows® 10 (32/64-bit), Windows® 8.1 (32/64-bit), Windows® 7 Professional / Ultimate (32/64-bit)	Model	Description
CPU	Intel® Core™2 Duo, 2.0 GHz or faster recommended	TrueVIS INK	TR2-CY Cyan, 500 cc
RAM	2 GB or more recommended		TR2-MG Magenta, 500 cc
Video card and monitor	A resolution of 1280 x 1024 or more recommended		TR2-YE Yellow, 500 cc
Free disk space (HDD/SSD)	40 GB or more recommended		TR2-BK Black, 500 cc
Hard-disk file system	NTFS format		TR2-WH White, 250 cc
Optical drive	DVD-ROM drive		TR2-LC Light Cyan, 500 cc
Ethernet Connection	100 mbps		TR2-LM Light Magenta, 500 cc
Other	Internet connection recommended		TR2-LK Light Black, 500 cc
			TR2-OR Orange, 500 cc
		Cleaning liquid	TR2-CL Cleaning liquid, 500 cc
About White Ink Due to the nature of white ink, the pigment in this ink can settle in the cartridge and ink flow system, requiring you to shake the cartridge before each use. Outdoor durability is three years for CMYKLcLmLkOr inks, depending on the media used.		Blades	ZEC-U5032 For standard sign vinyl, 2pcs.
			ZEC-U5025 For standard sign vinyl, reflective and fluorescent / thick media, 5pcs.
		Blade holders	XD-CH2 Adjustable blade holder - aluminium
			XD-CH3 Adjustable blade holder - resin

V62 Only

Print & Cut Materials

Perfect for full colour logos using print & cut device

Suitable for use with eco-solvent, solvent and UV ink. Prints onto cotton, polyester & poly/cotton blends and more.



Tatoo

One of the easiest printable films to use and has a slight sheen to the finished transfer. It's opaque, so suitable on all colour fabrics, with great washability.

Cotton, polyester & cotton / poly. Not suitable for coated fabrics.

165°C

7 sec

Hot Peel

60°

Or

165°C

17 sec

Hot Peel

40°

Medium Pressure

7 Sec with tape
+ 15 Sec repressing without tape

Medium Pressure

17 Sec with tape

Tatoo Nylon

Simple to use thin product with a matte finish. Due to the thinness it will need application tape to transfer the image to the garment.

Not suitable for use with TrueVis inks.

Best suited for Nylon and coated products but also cotton, polyester, poly/cotton.

115°C

15 sec

Cold Peel

40°

Medium / High Pressure

To be used with application tape



Tatoo SBB Optima

Similar to the Tatoo Plus product with a matte finish but with an additional blockout layer to prevent any dye migration from the garment. Perfect for Technical and sports fabrics.

Best Suited for coloured Polyester fabrics.

135°C

10 sec

Cold Peel

60°

Medium / High Pressure

To be used with application tape



Clearflex

A transparent film for full colour logos on white & light shirts. Print the image in mirror, so the ink lies between the garment and film, giving great wash fastness.

Cotton, polyester and poly/cotton (white and pale fabrics only)

160°C

15 sec

Cold Peel

60°

Medium / High Pressure

Print & Cut Materials

Perfect for full colour logos using print & cut device

Suitable for use with eco-solvent, solvent and UV ink. Prints onto cotton, polyester & poly/cotton blends and more.



Mozaic

Very easy to weed product so makes it great for all round use. Transfer gives a matte and soft finish. The choice of two heat press instructions means that you can also print this easily on to most fabrics without any issue. 5 second press option is also good for quicker production.

Cotton, polyester, poly/cotton

130°C

10 sec

Hot Peel

60°

Or

150°C

5 sec

Hot Peel

60°

Medium Pressure

10 Sec with tape
+ 15 Sec repressing without tape

Medium Pressure

15 Sec with tape

Grafitti Custom

A new product to the range after the huge success of the Moziac media. This product prints with a matte and soft finish but is much thinner in feel once pressed to the garment, whilst keeping both vibrant and vivid colours. This product also has more stretchability than the Moziac media.

Cotton, polyester and poly/cotton

125°C

10 sec

Hot Peel

60°

Or

150°C

10 sec

Hot Peel

60°

Medium Pressure

For polyester
To be used with application tape

Medium Pressure

For cotton
To be used with application tape

Prices, £ per m. 50cm & 75cm wide

Print & Cut (50cm/75cm)	10-24m (50cm/75cm)	25m+ (50cm/75cm)
Tatoo	5.40/7.95	5.20/7.60
Tatoo SBB	7.95/11.95	7.75/11.60
Tatoo Nylon	7.95/11.75	7.75/11.50
Mozaic	5.40/7.95	4.95/7.50
Clearflex	4.50/6.75	4.20/6.40
Grafitti Custom	5.40/7.95	4.95/7.50
Application tape 25cm x 25 metres - £27.50 per roll		
Application tape 50cm x 25 metres - £45.00 per roll		
Application tape 75cm x 25 metres - £60.00 per roll		

Heat Press Instructions - Quick Reference Guide			
Transfer	Temp	Time	Peel
Tatoo	165	7 Secs	Hot
Tatoo	165	17 Secs	Hot
Tatoo SBB Optima	135	10 Secs	Warm
Tatoo Nylon	115	15 Secs	Cold
Clearflex	160	15 Secs	Cold
Mozaic	130	10 Secs	Warm
Mozaic	150	5 Secs	Warm
Grafitti (poly)	125	10 Secs	Hot
Grafitti (cotton)	150	10 Secs	Hot

Information effective from 01/2019. Application instructions in this brochure are a guide, we recommend tests for accurate results. Colour swatches shown are merely a representation of those available. Prices quoted on all roll materials are based on the price per metre. Prices are ex-VAT.

Graphtec Vinyl Cutters

GRAPHTEC

High quality, excellent reliability, easy to operate.

The Graphtec Vinyl Cutter range has everything you need, whether you are a beginner or an expert looking for the best machine in the market. Robust machines that are build to last and are very easy to use.

All include Graphtec Studio Design Software and Cutting Master 3. Prefer to use your own design software? Then all of the below come with Plug-In software for Corel Draw and Adobe Illustrator.



CE7000-60

The Vinyl Film Cutter by Graphtec is perfect for cutting your vinyl to the ideal sizes & includes various cutting styles, including perforated and auto panelling.

- ▶ Improved Initial Down Force
- ▶ Enhanced ARMS to 5.0, improving productivity of Print & Cut
- ▶ NEW perforation cut function
- ▶ NEW auto panelling function
- ▶ Menu in 10 languages
- ▶ 2 operation modes (Normal and Advanced)
- ▶ New large graphic type LCD display
- ▶ Supplied with enhanced software as standard

Technical Specification	
Max Cutting area	603mm x 50m
Max Speed	900mm/s
Max Force	4.9N (500gf)
External Dimensions (WxDxH)	900 x 593 x 1046mm
Weight (approx)	21kg (inc stand 8kg)

CE7000-40

The Vinyl Film Cutter by Graphtec is perfect for cutting your vinyl to the ideal sizes & includes various cutting styles, including perforated and auto panelling.



- ▶ Improved Initial Down Force
- ▶ Enhanced ARMS to 5.0, improving productivity of Print & Cut
- ▶ NEW perforation cut function
- ▶ NEW auto panelling function
- ▶ 2 operation modes (Normal and Advanced)
- ▶ New large graphic type LCD display
- ▶ Menu in 10 languages
- ▶ Supplied with enhanced software as standard

Technical Specification	
Max Cutting area	375mm x 50m
Max Speed	600mm/s
Max Force	3.2N (330gf)
External Dimensions (WxDxH)	672 x 338 x 266mm
Weight (approx)	10.5kg

Silhouette Cameo® 4

The Cameo 4 is a desktop cutting machine for the modern maker. With a built-in roll feeder and crosscutter, the Cameo is the ultimate vinyl cutter, allowing you to cut directly from a roll. It also has increased speed and power over previous Silhouette machines, a 3 mm clearance to cut thicker materials, and Automatic Tool Detection. Cut vinyl, cardstock, fabric, and more to create custom projects for home, school, or business.

- ▶ Touch Screen Control makes for easy navigation and step-by-step tutorials
- ▶ Dual Carriage allowing you to multi-task by keeping a blade and pen in the holder
- ▶ Increased Cut Clearance of up to 3mm thick (dependent on media used)
- ▶ Auto Feed for accurate loading for printer registration mark recognition
- ▶ Optical Eye for reading printer registration marks allowing to print and cut
- ▶ Silhouette Studio Software simple to install and use. Draw, type text, create shapes and import graphics

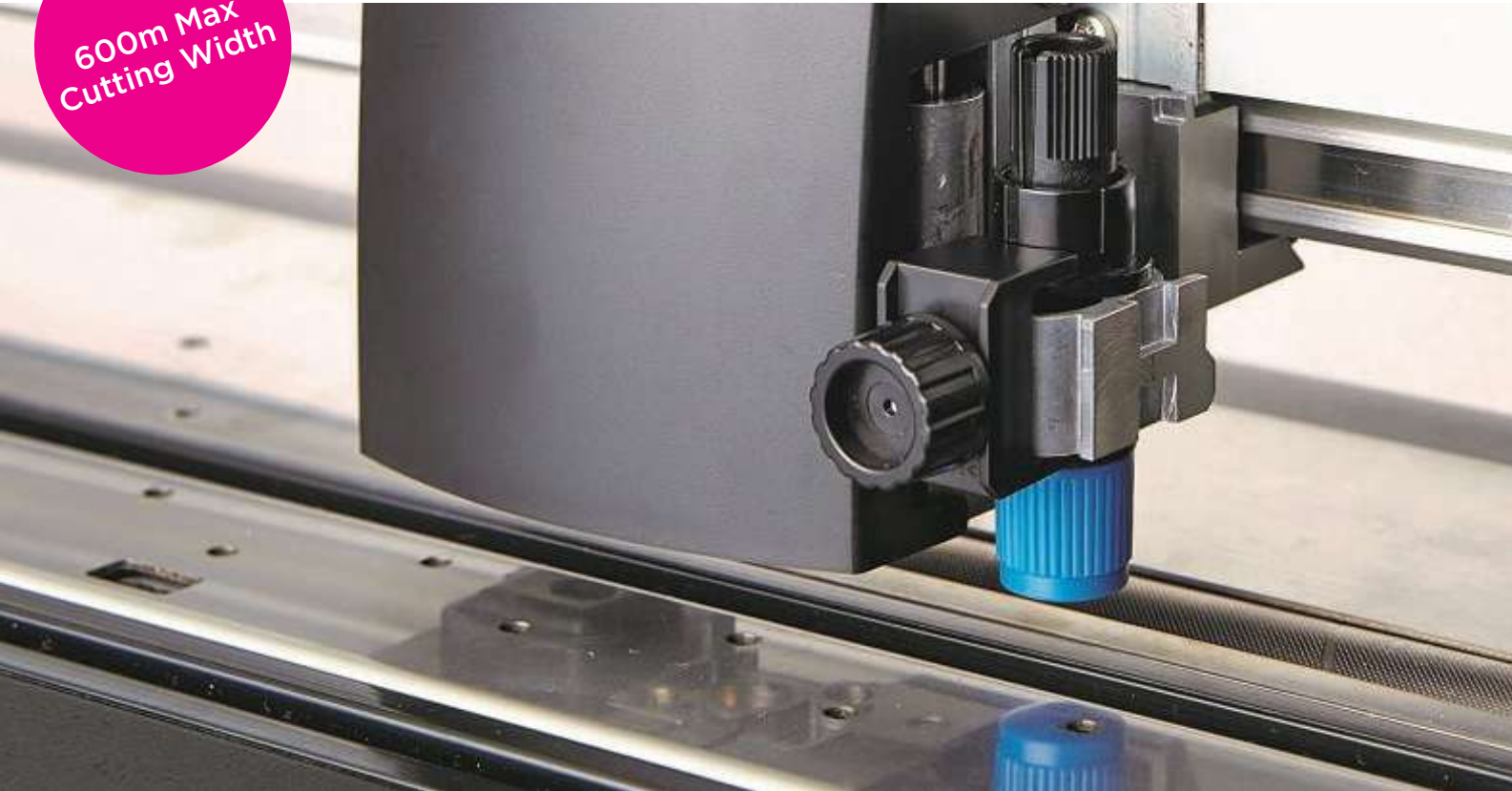
Technical Specification	
Max Cutting area	305mm x 610mm (12" x 24") with Carrier Sheet
Max Speed	300mm/s
Max Force	210gf
External Dimensions (WxDxH)	63cm x 27cm x 22.5cm
Weight (approx)	5KG



Available Colours



600m Max Cutting Width





Technical Specification		
Model	GR-540	GR-640
Max Cutting Area	1372mm x 50m	1627mm x 50m
Max Speed	1530mm/s	1530mm/s
Max Force	600gf	600gf
External Dimensions (WxDxH)	1711mm x 651mm x 1111mm	1982mm x 756mm x 1127mm
Weight (approx)	60kg	69kg

GR-540/640

If you are looking for higher production, then the GR2 540/640 series of large-format cutting plotters can be fit seamlessly into your workflow, delivering fast and flawless results from day one.

- ▶ Great return on investment
- ▶ Integrates with Roland VersaWorks Software
- ▶ Coreldraw and Adobe plug-ins
- ▶ User friendly
- ▶ Accurate crop mark detection
- ▶ Precise angle cutting



Technical Specification	
Max Cutting area	584mm x 25m
Max Speed	500mm/s
Max Force	350gf
External Dimensions (WxDxH)	860mm x 319mm x 235mm
Weight (approx)	13.5kg

GS-24

The legendary Roland CAMM-1 GS-24 vinyl cutter plotter is the next level of precision and efficiency. Now with a completely redesigned cutting carriage and blade holder, the GS-24 offers up to 10x overlap cutting and a down force of up to 350 grams - increasing your production time.

- ▶ Easy to use
- ▶ Innovative digital servo motor
- ▶ Accepts media with from 50mm-700mm wide
- ▶ Optical registration for pre-printed graphics
- ▶ Roland Cut Studio Software included
- ▶ Overlap cutting function making cutting and weeding easier than ever

Heat Transfer Films

Sef Textile have been involved in manufacturing garment decoration products for over 40 years. Their unique factory base in Laval France makes them the only integrated manufacturer of flock and flex films. From R&D, manufacturing QC & shipping, everything is done under one roof using local based suppliers, to keep the supply chain short & efficient. This coupled with their ethos to produce only eco-friendly products made them a perfect partner for Amaya to work with. All the films shown in this brochure are manufactured using water based formulations, with no solvents, completely safe for the environment, and many carry the Oeko-Tex accreditation - important information for your end customer.





Perfect for small & large logos on tees, polos, high vis & more!

Maxxflex

Prints onto cotton, polyester & poly/cotton blends

Maxxflex is a high quality, multi-layered polyurathane film, PVC free and produced without solvents. It has a sticky Polyester liner, good covering power, high elasticity and excellent weeding characteristics.

SBB Also available is a Subliblock version in white and lemon for dye sublimated polyester fabrics like sports shirts. The multi-layer composition of the material creates a barrier to stop any colour bleed from the garment.

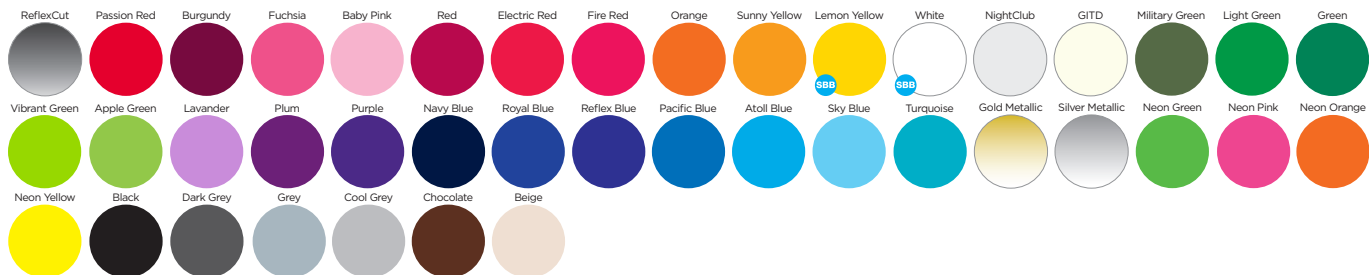
- ▶ Thin & soft handle
- ▶ Fine cutting & fast weeding
- ▶ Highly stretchable
- ▶ PVC free textile vinyl



Prices, £ per m. 50cm wide

Maxxflex Sticky	1-4m	5-24m	25m+
Standard Colours	5.20	4.90	4.80
Neon & Metallics	5.95	5.70	5.45
Glow in the Dark	8.95	8.70	8.20
Night Club	7.00	6.75	6.25
Subliblock II	7.95	7.70	7.45
Reflexcut	11.95	11.85	11.50

Available Colours



Subliblock II

Designed for sublimated polyester fabrics with an exclusive layer that stops migration from the garment through the film. Available in white & yellow.



Reflexcut

A high visibility film perfect for safety wear. The product is thin & stretchy and meets the EN471 Class 2 standard.



Flexcut Glow in the dark

A white flex film that will glow in the dark after exposure to daylight or artificial light.



Flexcut Night Club

A white flex film that glows under black light.

Rocket Cut

Suitable for cotton polyester, polycotton blends and technical fabrics.

Rocket Cut is similar to maxxflex, with an added advantage of application in 3 seconds and low temperature.

- ▶ Fast weeding
- ▶ 3 seconds transfer time
- ▶ Hot peel
- ▶ Available in X colours
- ▶ Very fine cutting



For Production Runs

Delicate Fabrics

Prices, £ per m. 50cm wide

Rocket Cut	1-4m	5-24m	25m+
Standard Colours	5.95	5.75	5.25
Neon & Metallics	6.30	6.05	5.85

Available Colours



3 second application! Perfect for production runs, fast turnaround & delicate fabrics



Perfect for waterproof & coated products

Ask about the water spot test!

Maxxflex Nylon

Prints onto nylon & waterproof coated materials.

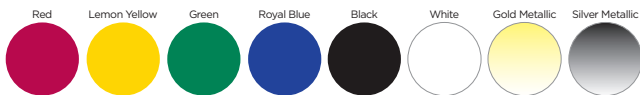
Maxxflex Nylon contains a specially designed low temperature hot melt adhesive, making it the perfect solution for waterproof and nylon adhesion problems. Ideal for jackets, bags, umbrellas & similar products.



Prices, £ per m. 50cm wide

Nylon	1-4m	5-24m	25m+
Standard & Metallics	6.25	6.05	5.95

Available Colours



Atomic Vinyl

Great metallic finish effect with the ability to weed extremely well on small detail.

The product has good covering power and is stretchable so lends itself well to cotton, polyester & other stretchable fabrics.

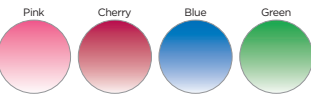


Medium/High Pressure

Prices, £ per m. 50cm wide

Atomic Vinyl	1-4m	5-24m	25m+
All Colours	7.95	7.70	7.50

Available Colours



Metalflex

Prints onto cotton, polyester & poly/cotton blends.

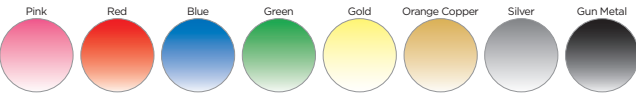
Create a premium effect with MetalFlex. MetalFlex is 100% PU Film which makes it light, very stretchable and with a beautiful metallic effect. Medium tack backing for small and large detail. Excellent washability at 40 degrees.



Prices, £ per m. 50cm wide

Metalflex	1-4m	5-24m	25m+
All Colours	6.75	6.50	6.25

Available Colours



Create an eye catching metallic finish



New to the range, easy to weed special effect

Fantasy Vinyl

Bright colours and patterns transforming your graphics into something a bit different!



Medium/High Pressure

Prices, £ per m. 50cm wide

Fantasy Vinyl	1-4m	5-24m	25m+
All Colours	7.95	7.70	7.50

Available Colours



Add value to your garment with a premium embossed finish!

Velcut Flock

Prints onto cotton, polyester & poly/cotton blends.

Velcut is a high quality heat sealable flock film for plotter cutting. Easy to weed and cut.



Prices, £ per m. 50cm wide

Velcut	1-4m	5-24m	25m+
Standard	8.95	8.65	8.35
Neon	10.25	10.00	9.75

Available Colours



Glitterflex

Let your artwork sparkle with our new line of Glitterflex heat transfer vinyl.

- ▶ Easy to cut and weed
- ▶ Hot peel
- ▶ 10 second transfer time
- ▶ 7 colours to choose from

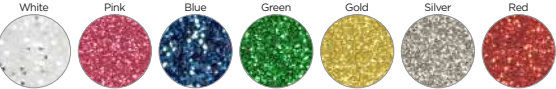


Medium/High Pressure

Prices, £ per m. 50cm wide

Glitterflex	1-4m	5-24m	25m+
Standard Glitter Colours	9.50	8.75	8.50
Neon Glitter Colours	10.50	9.75	9.50

Available Colours



Accessories

Weeding Tool
£15.00

Teflon Sheet
£17.00
49 x 46cm

Heat Resistant Tape
£7.00
10mm x 60m

Protection Paper
£49.95

Non Stick Pillows - Full Set **£75**

Create a flat surface for heat application. Non stick covered pillows with a heat-resistant foam core, helps give you a flat surface to heat apply transfers over buttons, seams, zips etc.

- Available in four sizes
- ▶ 20x16cm **£20**
 - ▶ 25x25cm **£20**
 - ▶ 46x13cm **£20**
 - ▶ 51x41cm **£30**



Heat Presses

STAHL'S SCHULZE

Excellent range of high quality heat presses from two leaders in the industry.

Amaya offer a great range of high quality heat presses that suit all types of business. The Stahl's heat presses are priced from the economical clam press up to the highly technical Fusion presses. Depending what sort of business you are in, we have the press to optimise your production. The Schulze heat press range goes from the basic clam right up to large presses for sublimation work up to 210 x 112 cm in size. Both manufacturers provide strong and robust presses cable of withstanding continuous use through out the day.

STAHL'S



Max Clam

- ▶ Touch screen technology
- ▶ Energy saving mode
- ▶ Sizes: 28x38cm, 38x38cm, 40x50cm



Hotronix Auto Open Clam

- ▶ Magnetic auto open and lock down function
- ▶ Digital time, temperature and pressure controls
- ▶ Wide opening for easy layout

Sizes: 15x15, 28x38, 40x40, 40x50cm



Hotronix Fusion IQ

- ▶ Touch Screen Technology
- ▶ Dual function - swing or draw motion
- ▶ Energy saving mode
- ▶ Unlimited presets

Sizes: 40x50 cm



Hotronix Air Fusion

- ▶ Touch Screen Technology
- ▶ Swing motion
- ▶ Energy saving mode
- ▶ Unlimited presets

Air compressor will be required

Sizes: 53x79 cm

Contact us to see our full range of heat presses

SCHULZE



Blue Press Line Manual MINI/1/2/3

- ▶ 3 memory slots to create your own profiles
- ▶ Changeable base & heat plates

Sizes: 10 x 13 cm, 28 x 38 cm, 38 x 38 cm, 40 x 50 cm



Blue Line Swing

- ▶ Swing head gives ease of access to your garment
- ▶ 3 different sized platens available

Sizes: 40 x 50 cm



Blue Press Line Auto Mini S/1S/2S/3S/DTG 4S

- ▶ Pneumatic press for more accurate production
- ▶ 3 memory slots to create your own profiles
- ▶ Changeable base & heat plates

Sizes: 10 x 13 cm, 28 x 38 cm, 38 x 38 cm, 40 x 50 cm, 40 x 60 cm



Pneumatic Blue Press

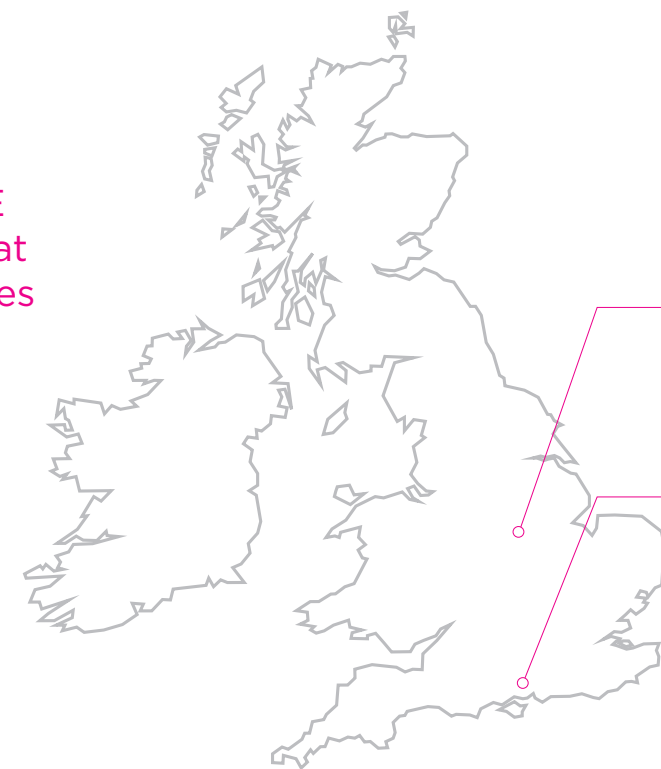
- ▶ Pneumatic press for more accurate production
- ▶ 3 memory slots to create your own profiles
- ▶ Changeable base & heat plates

Sizes: 38 x 45 cm and 40 x 50 cm

We also supply the following equipment:



Arrange a FREE demonstration at one of our offices



Midlands Office
Unit 4A-C East Bridgford Business Park, Kneeton Road, East Bridgford, Nottingham NG13 8PJ

Southern Office
Unit 400-450 Nest Business Park Martin Road, Havant, Hampshire PO9 5TL

AMAYA SALES UK
Leaders in Garment Decoration Equipment

T: 02392 590281
E: sales@amayauk.com

www.amayauk.com

Follow Amaya Sales UK

