

THERE ARE HEAT PRESSES AND THEN THERE'S
HOTRONIX®

HEAT PRINTING EQUIPMENT

PROUDLY MADE IN THE USA

Born from the specific requirements of heat transfer materials, Hotronix® has been taking the guesswork out of heat applying since the 1980s. Now stronger and more advanced than ever, Hotronix® continues to engineer and produce the world's best-selling heat presses and accessories.

Proudly made in the USA, Hotronix® looks to the future of heat press innovation in an ever-changing industry to help your business become an efficient, profit-generating machine.

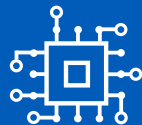
Target Transfers is the UK Division of Stahls' Hotronix® and a proud GroupeStahl company.



INDUSTRY
INNOVATORS



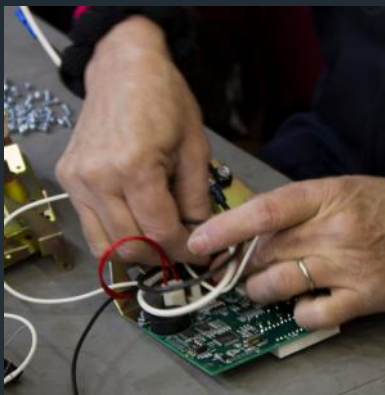
BLUE RIBBON
CUSTOMER SERVICE



TECHNOLOGY
DRIVEN



MADE
IN THE USA



More Than a Heat Press 4-5

NEW 360 IQ® Hat Press 6

Power Platen™ 7

Hotronix® Heat Presses 8-11

Dual Air Fusion IQ®	8
Air Fusion IQ®	9
Table Top Air Fusion IQ®	9
Fusion IQ®	9
Auto Open Clam	10
Auto Open Cap	10
Sports Ball Heat Press	10
The MAXX® Clam	11
The MAXX® Cap	11
Warranty	11

Accessories 12-13

Laser Alignment System	12
Heat Press Caddie™ Stand	12
Heat Press Caddie™ Shelves	12
STAHL'S EZ Weeding™ Table	13
Heat Printing Equipment Cart	13
Foam Cover Pad	13
Non-Stick Pillows	14

Platens 14-15

The Right Platen for Your Heat Press	14
Quick Change Platens	15
Interchangeable Cap Platens	15
Platen Covers	15

Contact 16

MORE THAN A HEAT PRESS

Every Hotronix® FUSION® comes equipped with the new Fusion IQ® control board that features advanced wireless technology, letting you interact with your heat press anywhere at any time with the web-based portal. This line of technologically advanced presses provide your business with insights into job and operator performance, allowing you to make proactive, data-driven changes in real time.



HOW DID THE WORLD'S BEST-SELLING HEAT PRESS GET EVEN BETTER?



By Adding Wireless Technology So You Can
Manage Your Business From Anywhere.

TRACK HEAT PRESS USAGE

Make sure you're getting the most out of your heat press. Track how much time your heat press is working vs. sitting idle.

DISCOVER THE PRODUCTIVITY OF EACH HEAT PRESS

Access real-time reporting and adjust your production capacity as needed.

TRACK THE PERFORMANCE OF EACH EMPLOYEE

Gain insight into when and how your employees are working, if there are any application issues, and manage permissions for accurate application without added supervision.

FOLLOW TOTAL IMPRESSIONS

The Fusion IQ® measures every preheat and every heat application so you stay up-to-date on the number of times your heat presses were engaged.

UTILISE PRESET APPLICATIONS FOR POPULAR ITEMS

Eliminate mistakes with factory-installed presets, or create your own to accurately apply the types of transfers and films your customers are ordering.

SET UP EXCEPTIONS

See how many times an operator went outside a preset application. Avoid production missteps to maintain the quality and durability of your products.

INTRODUCING THE 360 IQ® HAT PRESS

HIGH PROFIT, HIGH IMPACT HATS. ONE MACHINE.

Successfully print on all sides of a hat without removing it from the press. The one-size-fits-all molded platen eliminates crease lines, and a heated lower platen makes it the perfect solution for applying emblems, appliqué, and patches. Best of all, it comes equipped with advanced IQ® technology allowing you to track your business in real time.

FEATURES & BENEFITS

UPPER & LOWER HEAT

Heat from the lower platen makes application of dimensional emblems and embroidered or leather patches easy with dependable, quality results.

360° PRINTING

Print the front, back, and sides without removing the hat from the platen. No need to change platens with the one-size-fits-all platen. More Placements = More Profit.

NO HEAT PRESS CREASE

The uniquely designed molded lower platen forms to the shape of any hat, eliminating the heat press crease on decorated hats.

NO SCORCHING

Control the upper and lower platens independently. Reduce heat from the upper platen to protect the hat.

360 IQ® Hat Press

240 volt • 5 amps / 800 watts
Shipping: 22 kgs. • 63 L x 35 W x 63 H cm
Order Ref. 163694



HOTRONIX® POWER PLATEN™

THE POWER TO ELIMINATE SCORCHING — FOR GOOD.

The Power Platen™ applies heat directly beneath the transfer for a quicker bond between adhesive and fabric, applying less heat to the face of heat-sensitive garments. Compatible with Hotronix® Auto Clam, MAXX® Clam, and Air Fusion IQ® heat presses*, the Power Platen™ is available in four interchangeable sizes, each with a built-in pillow for the right fit, no matter what you're decorating.

FEATURES & BENEFITS

THREADABLE

Makes heat press fully Threadable when used with a Heat Press Caddie™ Stand.

LIGHTWEIGHT

Weighs 40% less than the Heated Lower Platen for easy maneuvering around your shop.

MULTIPLE SIZES

Do more with your heat press with four platen sizes to ensure a great press on whatever you're decorating.

BUILT-IN PILLOWS

Quickly get a solid press when applying over zippers, buttons, or seams.

COOL TO TOUCH

Insulating properties keep bottom of platen cool-to-the-touch while concentrating heat to the required area.

THE HOTRONIX® DIFFERENCE

Quality made in the USA with a 2-year warranty.



Controller

240 volt • 3.2 amps / 750 watts
Shipping: 2.2 kgs. • 25L x 21.5W x 21H cm
Order Ref. 163534

15 x 15cm (6" x 6")

240 volt • 0.4 amps / 88 watts
Shipping: 2.7 kgs. • 16.5L x 16W x 12Hcm
Order Ref. 163533

40 x 50cm (16" x 20")

240 volt • 3.2 amps / 750 watts
Shipping: 7.25 kgs. • 42.5L x 52W x 12Hcm
Order Ref. 163530

15 x 50cm (6" x 20")

240 volt • 1.1 amps / 275 watts
Shipping: 5.5 kgs. • 16.5L x 53W x 12Hcm
Order Ref. 163532

28 x 38cm (11" x 15")

240 volt • 1.6 amps / 390 watts
Shipping: 5.8 kgs. • 28.5L x 39W x 12Hcm
Order Ref. 163531

Power Platen™ Family (Includes Controller)

Shipping: 28 kgs. • 66L x 51W x 35.5Hcm
Order Ref. 163535

Requires a dedicated 20-amp circuit / 2-year warranty on controller / 1-year warranty on all other parts

**Not compatible with Hotronix® Fusion IQ® or draw presses. One or more patent and/or patents pending.*

HOTRONIX® HEAT PRESSES

DUAL AIR FUSION IQ® PRODUCTIVITY OPTIMISED

Built for ultimate heat printing efficiency, the Dual Air Fusion IQ® provides the functionality of two presses with dual 40 x 50cm workstations. Program the press to preheat on station A and complete final application on station B, automatically adjusting time and pressure as it shuttles between workstations. It's a smooth, quiet, and effortless operation controlled by the push of a button and tap of the foot pedal. Simply power on and choose between dual or independent operation.

The Dual Air Fusion IQ® also comes standard with a Laser Alignment System, assuring your job is on target every time. The laser system seamlessly integrates into each workstation and is controlled entirely through the touch screen.

Dual Air Fusion IQ® (2) 40 x 50cm Platens

240 volt • 15 amps / 3500 watts

Shipping: 226 kgs. • 115L x 115W x 85H cm

Model No. XRF2

Order Ref. 162189

Requires air compressor (not included) with minimum 1 horsepower and 8-gallon hold tank. Uses 32.6 CFM.



AIR FUSION IQ®

AIR POWERED FOR EFFORTLESS OPERATION

The Air Fusion IQ® offers a two-button operation which locks the upper platen down, applying accurate, even pressure, then automatically swings open to create a heat-free workspace. Patented Auto Adjust Pressure™ automatically adjusts to the thickness of the item you're printing. Program your time to change from preheating to final application. With up to four time and pressure settings, it's not just possible — it's automatic.

Air Fusion IQ® 40 x 50cm (16" x 20")

240 volt • 15 amps / 3500 watts

Shipping: 111 kgs. • 101.5L x 123W x 147H cm

Model No. XRF

Order Ref. 142082

Requires air compressor (not included) with minimum 1/2 horsepower and 2.5-gallon hold tank. Uses 2.3 CFM.



TABLE TOP AIR FUSION IQ® SPACE-SAVING TABLETOP DESIGN

Take everything you love about our Fusion IQ®, add the power of an air compressor, the compact size of a tabletop heat press, and you have the Table Top Air Fusion IQ®. With an upper platen that operates with the touch of a button, operator fatigue is a thing of the past.

Table Top Air Fusion IQ® 40 x 50cm (16" x 20")

240 volt • 15 amps / 3500 watts

Shipping: 82 kgs. • 94L x 61W x 61H cm

Model No. XRF-TT

Order Ref. 125303

Requires air compressor (not included) with minimum 1/2 horsepower and 2.5-gallon hold tank. Uses 2.3 CFM.



FUSION IQ®

#1-SELLING HEAT PRESS WORLDWIDE

In the decorating business, it's all about customization, and that's what we had in mind when we engineered the Fusion IQ®. Switch between the draw and swing motions depending on workspace, user preference, or garment. Touch screen technology allows you to program an unlimited number of presets. Add the compatibility of optional Quick Change Platens, and you'll be decorating more than ever.

Fusion IQ® 40 x 50cm (16" x 20")

240 volt • 15 amps / 3500 watts

Shipping 68 kgs. • 94L x 63.5W x 61H cm

Model No. XF

Order Ref. 013651



AUTO OPEN CLAM - 28 X 38CM

The 28 x 38 cm Auto Open Clam is perfect for shops with limited space. This lightweight, compact design is also a great choice for heat printing at off-site events.

28 x 38cm
240 volt • 4.5 amps / 1000 watts
Shipping: 33 kgs. • 91.5L x 63.5W x 53H cm
Model No. STX11
Order Ref. 013645



AUTO OPEN CLAM - 40 X 40CM

The 40 x 40cm Auto Open Clam is a popular choice and favored by many shops that print full-size transfers.

40 x 40cm
240 volt • 7.5 amps / 1800 watts
Shipping: 41 kgs. • 91.5L x 63.5W x 53H cm
Model No. STX16
Order Ref. 013646



AUTO OPEN CLAM - 40 X 50CM

This best-selling full-size clam's large surface accommodates the application of names and numbers on jerseys, allover sublimation prints, and oversized transfers. Compatible with nearly every optional Quick Change Platen, it's the most versatile heat press available.

40 x 50cm
240 volt • 7.5 amps / 1800 watts
Shipping: 45 kgs. • 91.5L x 63.5W x 53H cm
Model No. STX20
Order Ref. 013647



Also available in a hover model.
Order the Auto Open Clam as a Hover Press™, which is designed for curing inks during the DTG decorating process. Switch from Hover to Auto Open mode as needed.

Hover Press™
240 volt • 7.5 amps / 1800 watts
Shipping: 45 kgs. • 91.5L x 63.5W x 53H cm
Model No. STX20*
Order Ref. 013648

AUTO OPEN CLAM (15 X 15CM)

If you're heat printing small items or limited areas of apparel, here's the perfect press. Lightweight and portable, it's ideal for small decorating jobs in the craft market or other mobile heat printing opportunities.



15 x 15cm
240 volt • 1.5 amps / 360 watts
Shipping: 18.5 kgs. • 66L x 38W x 53H cm
Model No. STX6
Order Ref. 010938

AUTO OPEN CAP

Decorate with the reliability and accuracy of our Auto Open Cap press. A cap hold-down device pulls the front of the cap taut, securing it while providing a smooth surface for heat application. Decorate a variety of cap styles with six optional Quick Change Platens.



Auto Open Cap
240 volt • 2 amps / 500 watts
Shipping: 18.5 kgs. • 66L x 38W x 53H cm
Model No. STXC
Order Ref. 013649

SPORTS BALL HEAT PRESS

The Sports Ball Press is designed to easily customize or personalize inflatable sports balls. Balls can be customized for use as trophies, to commemorate a special event, or as a promotional giveaway.



Sports Ball Heat Press
240 volt • 1.5 amps / 360 watts
Shipping: 20.5 kgs. • 63.5L x 35.5W x 63.5H cm
Model No. STXBP
Order Ref. 163082

THE MAXX® CLAM

The MAXX® is the best-selling low-cost heat press. Trust these budget-friendly machines to outperform every press in their class. Whether you're just getting into heat printing, heat printing part time, or need a back-up press, these durable machines are the perfect partner.

28 x 38cm
240 volt • 4.5 amps / 1000 watts
Shipping: 33 kgs. • 91.5L x 63.5W x 53H cm
Model No. MAXX11
Order Ref. 110876



38 x 38cm
240 volt • 7.5 amps / 1800 watts
Shipping: 35 kgs. • 91.5L x 63.5W x 53H cm
Model No. MAXX15
Order Ref. 013657



40 x 50cm
240 volt • 7.5 amps / 1800 watts
Shipping: 47 kgs. • 91.5L x 63.5W x 53H cm
Model No. MAXX20
Order Ref. 013658



THE MAXX® CAP

This manually operated clamshell design is economical and easy to operate. The MAXX® Cap offers a digital time and temperature display, and a cap hold-down device keeps caps securely in place during heat printing.

The MAXX® Cap
240 volt • 2 amps / 500 watts
Shipping: 18.5 kgs. • 66L x 38W x 53H cm
Model No. MAXXC
Order Ref. 013659



STAHL'S HOTRONIX® PREMIER WARRANTY

Lifetime on heating element
5-year on framework
2-year on circuit board
1-year parts and labour
Free lifetime technical support

STAHL'S HOTRONIX® MAXX® WARRANTY

Lifetime on heating element
1-year parts and labour
Free lifetime technical support

HEAT PRESS ACCESSORIES

HEAT PRESS LASER ALIGNMENT SYSTEM

For fast, accurate, and precise placement, choose the Hotronix® Heat Press Laser Alignment System. This tabletop unit features four adjustable lasers and is compatible with any brand of heat press. Included is the Laser Alignment Wizard™, a heavy-duty, spiral-bound template with five popular layouts. Simply align each bulb to the guides for accurate positioning.

Order Ref. 561150



HEAT PRESS CADDIE™ STAND

The Heat Press Caddie™ Stand is an adjustable pedestal stand that converts any Hotronix® Auto Open or MAXX® Clam into a threadable heat press. Self-leveling casters provide portability and stability, allowing you to take advantage of mobile heat printing opportunities.

Caddie Stand Order Ref. 125187

Counter Caddie Order Ref. 561100



HEAT PRESS CADDIE™ SHELVES

Designed to easily attach to your Hotronix® Heat Press Caddie™ or Air Fusion IQ® pedestal stand, these sturdy, adjustable shelves keep your heat transfer products, blanks, and accessories within reach. Both trays can be rotated in either landscape or portrait position, offering you convenience and flexibility.

Order Ref. 140027



STAHL'S® EZ WEEDING™ TABLE

- The bond between a heat transfer material and its carrier lessens when heated. This patented table heats materials slightly to promote removal from the carrier, resulting in easier weeding with less material breakage.
- 50 x 91cm weeding area – a full yard of weeding production
 - Three temperature settings – 43°C for fine-detailed designs, up to 54°C for maximum productivity on larger jobs
 - Top clamp holds materials in place while weeding
 - Built-in storage compartment
 - Fits most production tables and countertops

Actual Weight: 12 kgs.
Shipping Weight: 13 kgs.
Dimensions: 99L x 70W x 10H cm (Closed)
Dimensions: 99L x 70W x 43H cm (Open)
Shipping Dimensions: 79L x 109W x 20H cm
Order Ref. 163072



HEAT PRINTING EQUIPMENT CART

- Add more counter space to your shop with this heavy-duty steel cart. Designed to hold the Dual Air Fusion IQ®, it can also be used with other heat presses, small vinyl cutters, printers, and more. Pivoting wheels allow for easy movement around shops or at events, and lock to ensure stability.
- Powder-coated, scratch-resistant, heavy-duty steel
 - Holds up to 270 kgs.
 - Adjustable height, from 43 to 89cm
 - Lockable, pivoting wheels

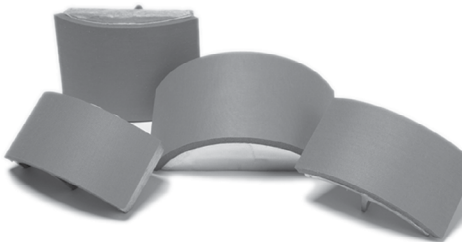
Actual Weight: 55 kgs.
Shipping Weight: 57 kgs.
Dimensions: 95.5L x 61W x 44H cm
Shipping Dimensions: 87L x 63W x 46H cm
Order Ref. 162776



INTERCHANGEABLE CAP PLATENS











Interchangeable cap platens make decorating hats easy. Whether you have a low-profile or oversized hat, we have a platen that fits.

	Model No.	Order Ref.
All Star 7 x 16.5cm (2.75 x 6.6") - for low-profile caps	PLCAP2X6	(562952)
Rookie 7.5 x 14.5cm (3 x 5.75") — for low-crown caps	PLCAP3X5	(562954)
Slugger 9 x 15.5cm (3.5 x 6") — for full-crown ball caps	PLCAP3X6	(562956)
Champ 10 x 20cm (4 x 8") — for oversized caps	PLCAP4X8	(562960)
Full Size 10 x 16.5cm (4 x 6.5") — for full-profile caps	PLCAP4X6	(562958)
Baby Ruth 6 x 7.5cm (2.5 x 3") — for baby ruth caps	PLCAP2X3	(562950)



THE RIGHT PLATEN

FOR YOUR HEAT PRESS

										
Order Ref	10 x 10cm (562910)	18cm (562938)	15 x 25cm (562911)	20 x 25cm (562912)	28 x 38cm (562913)	Hat Bill (562940)	Shoe (562935)	Can Cooler (562942)	Sleeve/ Leg (562944)	Double Sleeve/ Leg (562936)
DUAL AIR FUSION IQ®	•	•	•	•	•	•	•	•	•	•
AIR FUSION IQ®	•	•	•	•	•	•	•	•	•	•
FUSION IQ®	•	•	•	•	•	•	•	•	•	•
AUTO OPEN CLAM (40 x 50cm)	•	•	•	•	•	•	•	•		•
AUTO OPEN CLAM (40 x 40cm)	•	•	•	•	•	•	•			
AUTO OPEN CLAM (28 x 38cm)	•	•	•	•	•		•			
THE MAXX® CLAM (40 x 50cm)	•	•	•	•	•	•	•	•		•
THE MAXX® CLAM (38 x 38cm)	•	•	•	•	•	•	•			
THE MAXX® CLAM (28 x 38cm)	•	•	•	•	•		•			

Compatible with heat presses manufactured after 2014. Custom platens available. Call 01376 326531 for a quote.

PLATEN COVERS

Quick Slip Lower Platen Protector - This fitted cover slips snugly over the bottom platen, making it easy to slide the garments on the platen. It also reduces wear and tear on the lower platen.

15 x 25cm	(560010)
20x 25cm	(560015)
28 x 38cm	(013677)
38 x 38cm	(013674)
40 x 40cm	(013675)
40 x 50cm	(013676)

Upper Platen Cover - This fitted cover slips snugly over the upper platen, protecting it from inks, adhesives, and other residue during the heat printing process.

40 x 50cm	(125288)
-----------	----------

NON-STICK PILLOWS

Non-stick heat-resistant foam core pillows in various sizes. Ideal when pressing garments with V-necks, buttons, zips or heavy seams. Easily cleaned. An essential tool in our opinion.

20 x 16cm	(013679)
25 x 25cm	(013680)
46 x 13cm	(013678)
51 x 41cm	(013681)
Pillow Set (One of each size)	(013682)

FOAM PAD

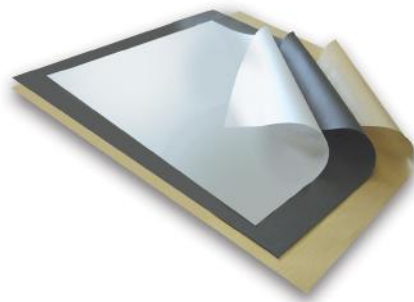
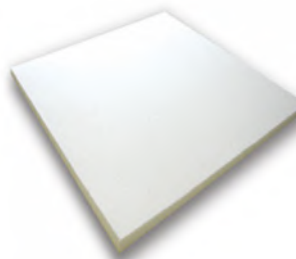
Used when printing garments with pockets, sleeves and bag panels, simply cut the pad to size and place under the fabric.

38 x 38cm	(560031)
-----------	----------

RELEASE PAPER, COVER SHEETS & HEAT TAPE

Non-stick coated cover sheets produce a high gloss finish to vinyls after pressing. Use Grip Flex Pad with Nylon materials to bed the vinyl into the weave of the fabric, also helps diminish dye migration. Use Release Paper to protect your heat press platen and garment when pressing.

Release Paper A4 (50 sheets)	(560021)
Release Paper A3 (50 sheets)	(560022)
Release Paper 38x38cm (12 sheets)	(560020)
Non-stick Cover Sheet (49x46cm)	(013683)
Gripflex Rubber Pad (46x56cm)	(162216)
Heat Thermotape (9mm wide x 66m long)	(013688)



PLEASE READ

Conditions of Warranty Cover & Back to Base Servicing/Repairs

1. Please note that all returns are dealt with on a case by case basis depending on the circumstances.
2. Standard warranties exclude any claim which is due to general wear and tear, or failure to properly maintain or adequately protect the press. Claims for accidental or deliberate damage are also excluded.
3. All Heat Press Warranties are a "Return to base" warranty. The Heat Press will need to be returned to us for a Warranty Repair and once complete Target Transfers Ltd will then return the Heat Press to you at their cost. This is only applicable to the UK mainland only. All other area will incur return carriage charges based on actual cost.
4. The original shipping carton and packaging MUST be retained by the purchaser, and MUST be used for ALL back to base repairs and servicing. Failure to do so will invalidate the Return to base warranty and will incur an additional cost as your/our carrier will not collect or deliver the press without the correct carton and packaging because of the risk of damage to the press during transit.
5. If the original carton and packaging is not retained then the purchaser will be required to deliver and collect the press in person to avoid risk of damage to the press. A replacement carton and packaging may be available at an additional cost depending upon availability.
6. Free Delivery is available for the UK Mainland only on orders of Heat Transfer Vinyl, Print & Cut Media and Smaller Heat Presses only. Please contact us for delivery rates of our other product ranges. To qualify for same day despatch the products must be in stock with us and your account must be trading within the agreed credit terms. Although we are always competitive with our lead times on custom print, we cannot include it in this scheme. Garments, Application and Die Cut Letters & Numbers are also not eligible for this time frame.

Full Terms and Conditions available upon request.